

Enhancing Community Sustainability: The Glenealy Plantations Sdn Bhd (GPSB)-Natural Resources and Environment Board (NREB)-Ministry of Health (MOH) Outreach Program in Data Bera'an, Belaga, as Part of the Belaga Recovery Site (High Carbon Stock) Program

INTRODUCTION

On the 18th of October 2025, Glenealy Plantations Sdn Bhd (GPSB), in strategic partnership with the Natural Resources and Environment Board (NREB) and Ministry of Health (MOH) Belaga, organised a community outreach event in *Rumah Panjang* (Rh). Yus Bit, Data Bera'an, downstream in the Daerah Kecil Sg. Asap region of Belaga District, Kapit Division, Sarawak. This is a new GPSB socio-economic sustainability initiative that represents a multi-sector collaborative effort designed to uplift, educate, and empower local communities. The focus was on sustainable agricultural development, environmental protection awareness, and public health education. A total of 144 participants (Refer Photo 1), including local community members and representatives from all collaborating organisations, took part in this inclusive full-day event, emphasising hands-on activities coupled with knowledge-sharing sessions to maximise community impact.

PROGRAM ACTIVITIES AND IMPLEMENTATION

A. LIST OF PARTICIPANTS

- Glenealy Plantations Sdn Bhd (GPSB) Management and Staff,
- Natural Resources and Environment Board (NREB Bintulu) Staff,
- Ministry of Health (Belaga District) Staff, and
- Local communities from Data Bera'an, including their community leaders.



Photo 1: Participants of the Belaga Recovery Site Project October 2025 Outreach Program

B. OBJECTIVES OF THE OUTREACH PROGRAM

The program was built around four principal objectives reflecting GPSB's commitment to community welfare, environmental stewardship, and multi-sector collaboration. These objectives are as follows:

1. Extending Support and Knowledge Transfer via the Belaga Recovery Project's annual program and activities:

GPSB aims to transcend its immediate Belaga Recovery Site project's boundaries by directing knowledge and expert resources through government agencies to communities around Data Bera'an, enhancing their welfare and livelihoods.

2. Strengthening Belaga Recovery Project's Multi-Stakeholder Relationships:

The event sought to deepen cooperation and trust among the community, industry players, and government agencies via the Belaga Recovery Site project's activities and programs by sharing expertise across agricultural and educational fields, ultimately fostering resilience.

3. Promoting Collaborative Connections:

By linking industrial operations, academic institutions, and surrounding communities tightly together, the outreach aimed to foster positive attitudes toward environmental and social care within the broader GPSB project areas.

4. Raising Awareness on Critical Community Issues in Belaga Recovery Areas:

Educational talks focused on river and stream conservation, domestic and electronic waste management, and infectious disease prevention, emphasising practical measures communities can reduce health risks and protect the environment, particularly areas within the Belaga Recovery Site's boundaries.



Photo 2: Participants from various groups, including the Data Bera'an community, were listening to a talk by NREB and KKM

C. PROGRAM DESCRIPTION

The outreach program combined practical environmental and agricultural activities with informative sessions to foster sustainable development in the Belaga Recovery Site area.

a. Fig Seedling Planting:

30 *Ficus racemosa* and *Ficus nervosa* (Figs) seedlings were planted in the Belaga Recovery Site as part of biodiversity restoration and ecological resilience efforts (Refer Photo 3).

b. Fruit Tree Planting:

Guided by GPSB and NREB, the local community members planted various high-value fruit trees such as durian clones (Musang King, Black Thorn, Tekka, Kanyao) and Nanchem (*Artocarpus* sp.). This initiative will support both food security under the Belaga Recovery Project (BRP) and future income opportunities, while also contributing to greener community spaces (Refer Photo 4).

c. Environmental Awareness:

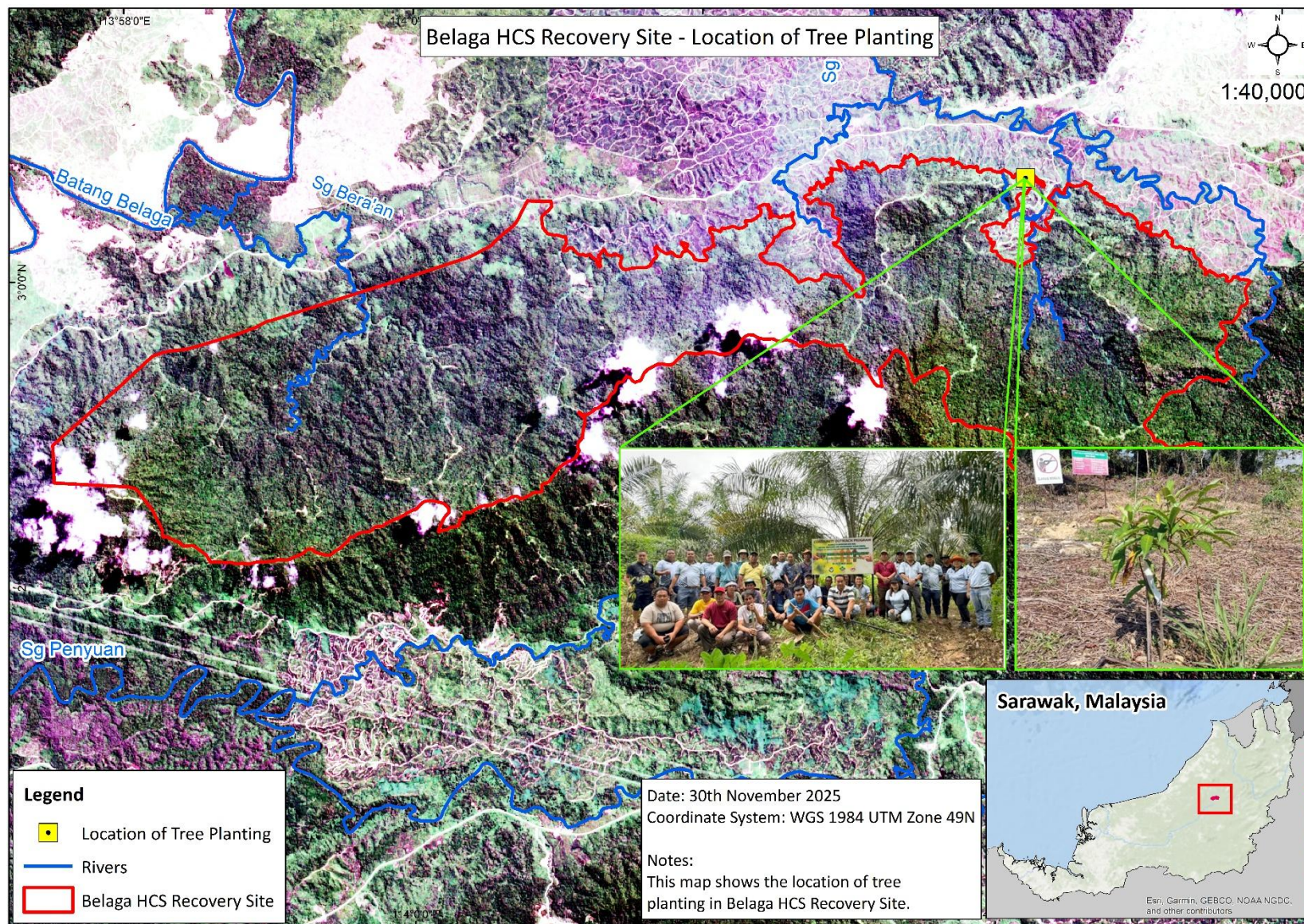
NREB conducted two talks on sustainable domestic waste management and the protection of river and stream ecosystems, with a focus on safeguarding local water resources, particularly involving the riverine ecosystem within the Belaga Recovery Site.

d. Health Awareness Briefing:

The Ministry of Health representatives delivered education on infectious diseases, including influenza, dengue, and rabies, emphasising early treatment and prevention (Refer Photo 8).

e. Community Engagement:

The day began with opening remarks by GPSB's Belaga Complex Senior Manager and the local community leader. A communal lunch fostered social bonding, and the program concluded with souvenir presentations to recognise participants' contributions (Refer Photo 7).



Map 1: Location of Tree Planting during the October 2025 Outreach Program within the BRP site



Photo 3: Sample of Fig Trees Replanting within the Restoration Area of BRP

D. BENEFITS OF THE ACTIVITIES TO THE BELAGA RECOVERY SITE PROJECT AREA

- **Environmental Restoration of BRP:**

Planting of the Fig species will improve biodiversity composition and ecological resilience, particularly in degraded areas within the Belaga Recovery Site.

- **Food Security & Economic Potential:**

Introduction of valuable fruit tree varieties, including Durian clonal species, will support sustainable food sources and future community income within the Belaga Recovery Site.

- **Sustainable Practices within GPSB and BRP areas:**

Increased knowledge on waste management and ecosystem conservation that will promote long-term environmental stewardship, especially for communities within the Belaga Recovery Site.

- **Health Improvement:**

Strengthened the GPSB's and the local community's awareness of infectious diseases, as well as the importance of healthier living conditions and timely medical intervention.

- **Building Relationships:**

Enhanced community pride and cooperation through shared activities and mutual recognition, particularly involving governmental agencies and industries.



Photo 4: Ficus Tree Planting by the Community Leader of Data Bera'an and Belaga Estate SM at the BRP Designated Restoration Area

The event attracted a well-rounded group of stakeholders:

- Community participation was key in ensuring a holistic approach towards social development. The direct involvement in planting activities enhanced practical learning, while the knowledge sessions equipped participants with actionable insights for environmental care and disease prevention. The Belaga Recovery Project's outreach program has positively influenced the community's attitudes towards sustainable living and health awareness, laying a foundation for improvement and collaboration with the community of Data Bera'an.



Photo 5: Group Photo of the Participants at the BRP Designated Restoration Area

F. BROADER IMPLICATIONS AND FUTURE DIRECTIONS

This Belaga Recovery Project's outreach program exemplifies how multi-party collaboration fosters a resilient and sustainable rural community amid global environmental and health challenges. GPSB's integrated approach combines food security through tree planting, ecosystem restoration, environmental conservation education, and infectious disease prevention education, which addresses complex socio-economic and ecological issues with practical solutions. This initiative strengthens community ties with commercial and governmental bodies, setting a model for future programs across Sarawak and beyond, particularly within High Carbon Stock (HCS) conservation sites.

Environmental awareness talks are vital in empowering local communities with critical knowledge about environmental stewardship, conservation, sustainable land use, and health practices. Such talks foster informed and active participation in protecting ecologically significant areas. They strengthen community engagement, build collaborative relationships among stakeholders, and promote sustainable behaviours essential for the long-term preservation of biodiversity and ecosystem health.

The planting of two types of Fig tree species in the conservation area is especially important due to their ecological and socio-economic benefits. Fig trees, as keystone species, support the local biodiversity by providing essential fruit resources that sustain diverse wildlife during scarce periods. Their canopies regulate microclimates by moderating humidity, temperature, and soil conditions, enhancing habitat quality and supporting the growth of other valuable plants. Additionally, Fig trees contribute to carbon sequestration and overall ecosystem resilience. Community-led planting efforts not only restore degraded landscapes but also improve local livelihoods by increasing the availability of economically and medicinally valuable plants, thus aligning conservation goals with community development.

Together, the environmental awareness talks and the tree planting represent a strategic, integrated approach to protect the conservation area, which includes combining education, biodiversity restoration, and community empowerment to promote sustainability and resilience. Therefore, beyond the immediate outcomes, such as new fruit tree orchards and improved awareness, the program's legacy lies in its empowerment of the local populations to actively care for their environment and health, encouraging early treatment and preventive care measures. GPSB's continued commitment to Corporate Social Responsibility (CSR) and NREB and MOH Belaga's dedicated involvement ensure ongoing support, monitoring, and sustainability of this initiative, echoing a collective vision of fostering growth, inspiring change, and achieving enduring community prosperity.

APPENDIX (ACTIVITY PHOTOS)



Photo 6: Group Photo at the BRP Restoration Designated Area near Rh. Yus Bit, Data Bera'an



Photo 7: Token of Appreciation Presentation to NREB, MOH and Data Bera'an representatives



Photo 8: Health talk on the Threat of the Influenza Outbreak by Mr. Adrian, the Representative from the MOH (Belaga)



Photo 9: Fig Seedlings Planting by NREB and the Estate Representative



Photo 10: Durian Clonal Species Planting by Mr. Romeo Yun, a Representative from MOH (Belaga)



Photo 11: Fig Seedling Planting Demonstration by a Local Community from Data Bera'an



Photo 12: Health Screening Booth Set-Up by the Representatives of MOH (Belaga)



Photo 13: Participants from Data Bera'an during a Health Talk Presented by the MOH (Belaga) Representative